



Guide to IPSF Summer at Lakeside

Session A - June 13th-July 2nd

Lakeside Middle School
3 Lemongrass, Irvine, CA
949 936-6100

Site Administrator:
Jeremy Stonebarger - jstonebarger@ipsf.net

Site Clerk:
Jean Goonewardene - jgoonewardene@ipsf.net

Welcome to IPSF Summer at Lakeside Middle School! We're excited to have your child with us and hope their learning experience will be enjoyable and meaningful. Please read through the following important informational items, classroom assignments, campus map, and parking lot procedures. IPSF staff will be wearing gray polos, orange lanyards, and identification badges so please ask one of us to guide you in the right direction.

Please be prompt when dropping off and picking up your child. Students not picked up within ten minutes of dismissal will be escorted to the front office. **Excessive late pick-ups may result in a dismissal from the program.**

Daily Schedule

Middle School Schedule – Grades 7-8 Location: Lakeside	
8:20 a.m. – 8:30 a.m.	Student drop-off
8:30 a.m. – 10:10 a.m.	Period 1 class
10:10 – 10:20 a.m.	Student pick-up (for students attending Period 1 only) Student drop-off (for students attending Periods 2)
10:20 a.m. – 12:00 p.m.	Period 2 class
12:00 p.m.	Student pick-up

Parking and Drop-off/Pick-up Procedures

This site will be hosting a large number of students this summer. Students may be dropped off by either of the Lakeside signs on Lemongrass or Stone Creek. Parents may not drop off in the Lakeside parking lot – it is reserved for Staff parking ONLY. In addition, the Irvine Police Department will cite any parent parked illegally or unloading students in any street away from the curb, often referred to as double parking. Not only is it illegal, but incredibly dangerous. Parents and students are to refrain from walking through lanes of traffic in the parking lots. It is required and imperative that everyone uses the sidewalks at all times. Safety is our utmost concern and your cooperation is expected and obligatory.

Period 1 students:

- Drop-off: Students may not arrive prior to 8:15 a.m. Students are to report to their classrooms (map and classroom numbers included below).
- Pick-up: Parents may enter campus to pick up students at the sound of the bell at 10:10 p.m. Upon picking up your child, promptly exit the campus as classes are still in session for period 2 students. Your cooperation will help us provide proper supervision and ensure the safety of all students.

Period 2 students:

- Drop-off: Students may not arrive prior to 10:10 a.m. Students are to report to their classrooms (map and classroom numbers included below).
- Pick-up: Parents may enter campus to pick up students at the sound of the bell at 12:00 p.m.

Student Safety

- Please consider peanut-free options for snacks and remind your child not to share their food as we have many students with food allergies. Peanut-free lunch tables are available in the lunch area if desired.
- This is a CLOSED campus for the safety of all students and staff. Parents and non-staff adults will NOT be allowed on campus during class sessions. **Parents are not permitted to volunteer or observe in class at anytime, and are not allowed to enter lunch area with students during snack.**
- Please do not send sports equipment or electronic entertainment devices with your children. Cell phones should be turned off once on campus and stored in their backpack. We will provide sports equipment for recess playtime.
- Dogs are NOT allowed on campus at anytime.
- The summer program is an educational setting, so all school rules apply. Misconduct may be documented and communicated to parents through a behavior citation form. **Disruptive behavior and repeated misconduct may result in a dismissal from the program without a refund.**

Student Expectations

Our students are to be prepared for classes each day. We ask for the support of each parent in observing these expectations.

- We will maintain a dress code for safety and support of classroom instruction:
 - Students should wear closed toed shoes at all times.
 - Clothing with offensive messages or revealing clothing are not permitted.
- We will maintain a behavior code as follows:
 - Students will demonstrate behavior that is safe for themselves and others.
 - Students will show courtesy and respect for other people, school property, and property of others.
 - Students will stay only in supervised areas at all times.

What to Bring

- All class-related supplies will be provided, but students can bring a backpack and their own general supplies if they would like.
- Please ensure your child has a nut-free snack to enjoy during break.
- For outdoor classes, please ensure your child has applied sunscreen and brings a hat.
- For students requiring medication, please make sure you have the Medication Authorization Form filled out and drop off with the medication to the front office on the first day.

Absences/Illness

- Please call 949-936-6100 or email jgoonewardene@ipsf.net to notify the clerk that your child will be absent from the program.
- Any child exhibiting signs of illness should not attend classes. They should be fever-free for 24 hours before returning to their classes.

Class Changes & Refunds

The deadline for class changes and refunds has passed. We will not be able to accommodate any class changes or refunds for this session.

We are looking forward to a great summer experience! Instructors will be contacting all parents via email on the first day of the session to personally introduce themselves and their classrooms to you.

If you have any questions or need assistance during our program, please call the Lakeside office at 949-936-6100.

Sincerely,

Jeremy Stonebarger
Session A Administrator

Jean Goonewardene
Office Clerk



Dear Parent/Guardian,

One or more of the children in your child's classroom has an allergy to nuts. This allergy can be fatal. We ask that you assist us in providing this/these student(s) with a safe summer environment.

This is how you can help:

- Do not send any nuts or items containing nuts with your child (including all nuts, peanuts, tree nuts, etc.). This includes containers that used to have nuts or peanut butter in them.
- If your child eats peanut butter or any nuts before class, please make sure they wash their hands before coming on campus.
- Some children will bring a snack or lunch. Please help us keep our children safe by selecting your child's snack carefully.
- Remind your child to refrain from sharing food.

Thank you for your help.

Sincerely,

Cheryl L. Braun

Cheryl Braun
Chief Program Officer
Irvine Public Schools Foundation



1 Post, Suite 250
Irvine, CA | 92618
949.263.8340 | www.ipsf.net



SESSION A - LAKESIDE

Site Administrator Jeremy Stonebarger

Site Clerk Jean Goonewardene

Class Name (alpha order)	Period	Instructor Name	Room #
Art Workshop	1	Cesar Escobedo	312
Creative Writing	1	Laurel Berkheimer-Wolf	300
Intro to Coding & VR	1	Rich Glasgow	302
Preparation for 7th Grade Math	1	Amina Ahmed	306
Preparation for Advanced 8th Grade Math	1	John Weber	308
Public Speaking, Debate & Communication	1	Kevin Bui	304
Ultimate Frisbee & Dodgeball	1	Athina Simolaris	Field House

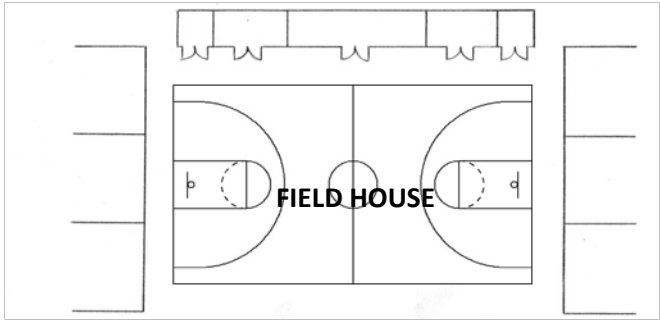
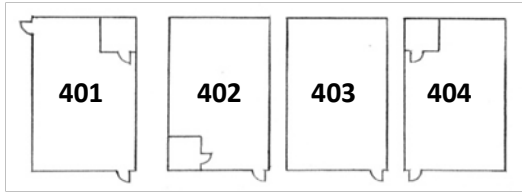
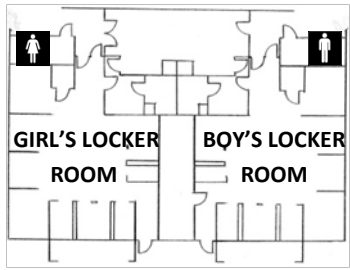
Class Name (alpha order)	Period	Instructor Name	Room #
Art Workshop	2	Cesar Escobedo	312
Intro to Coding & Virtual Reality	2	Rich Glasgow	302
Intro to Spanish	2	Athina Simolaris	310
Mechanics of Writing	2	Laurel Berkheimer-Wolf	300
Preparation for 8th Grade Math	2	John Weber	308
Preparation for Advanced 7th Grade Math	2	Amina Ahmed	306
Public Speaking, Debate & Communication	2	Kevin Bui	304

LAKESIDE

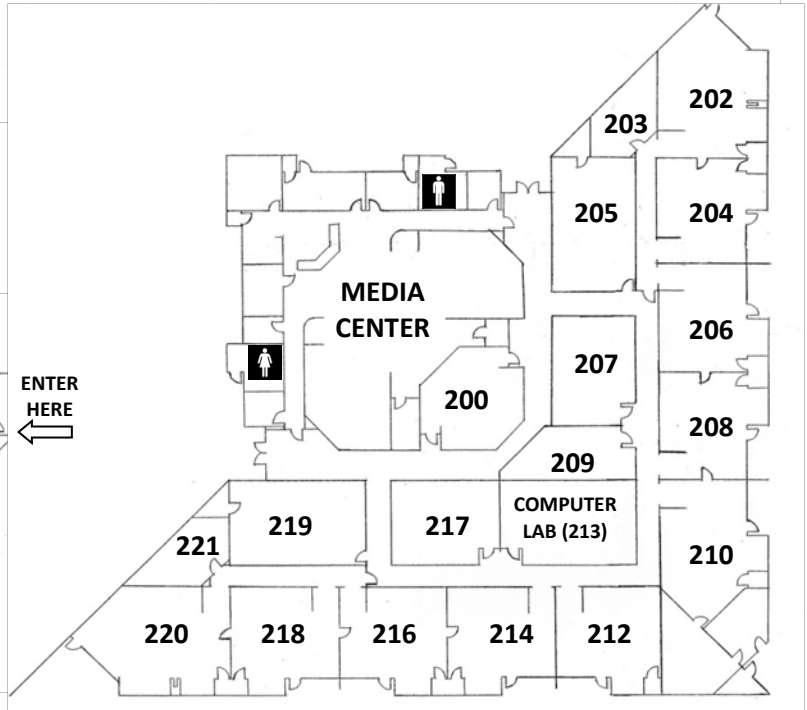
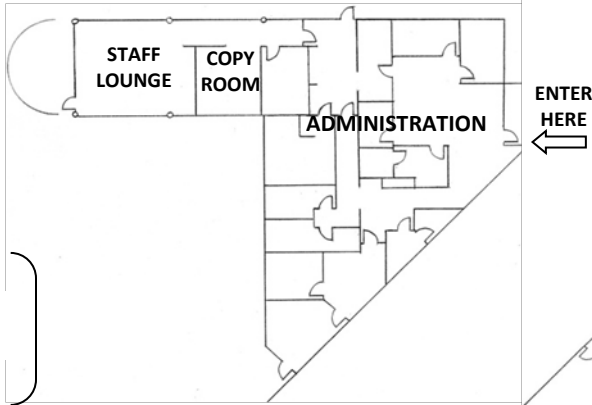
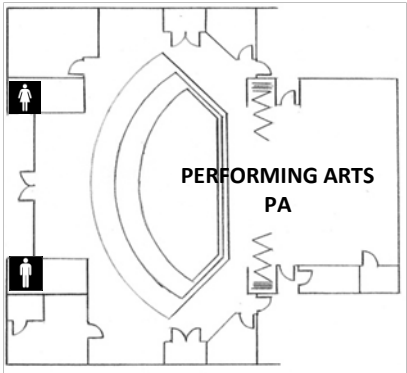
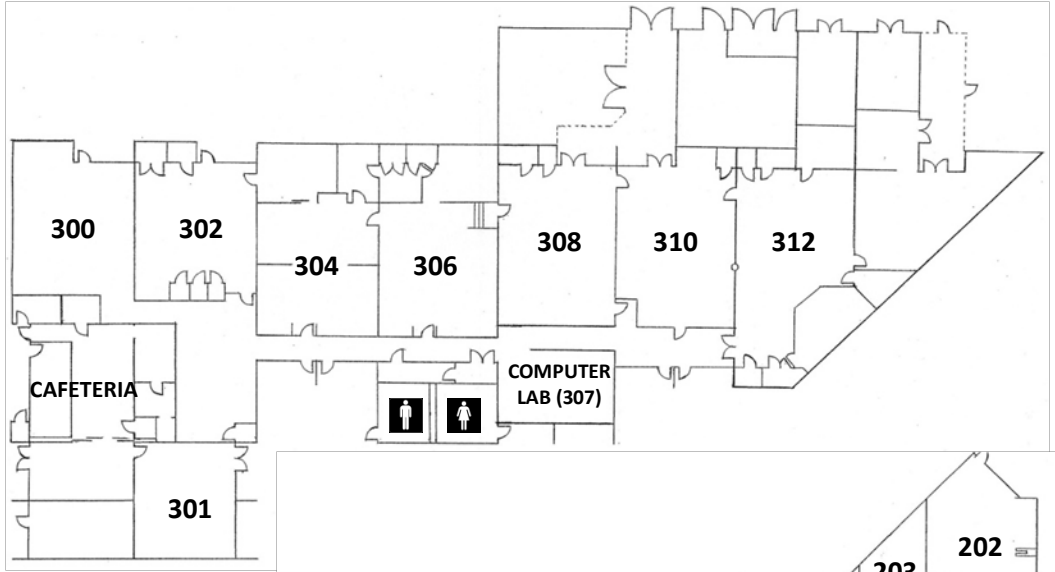


MIDDLE SCHOOL

3 LEMONGRASS
IRVINE, CA



LUNCH AREA



PARKING LOT

BIKE AREA

LEMONGRASS